

D2-851
D1406

AU
XR

EX
555,211

(No Model.)

E. H. COOPER.
-BICYCLE SKIRT.

No. 555,211.

Patented Feb. 25, 1896.

Fig. 1.

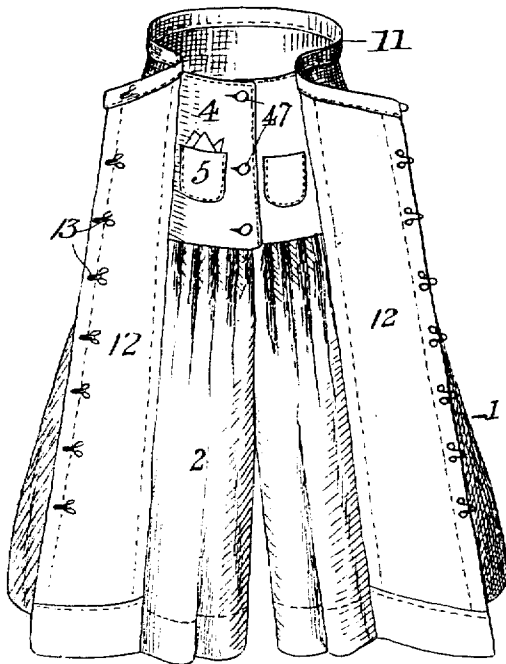


Fig. 2.

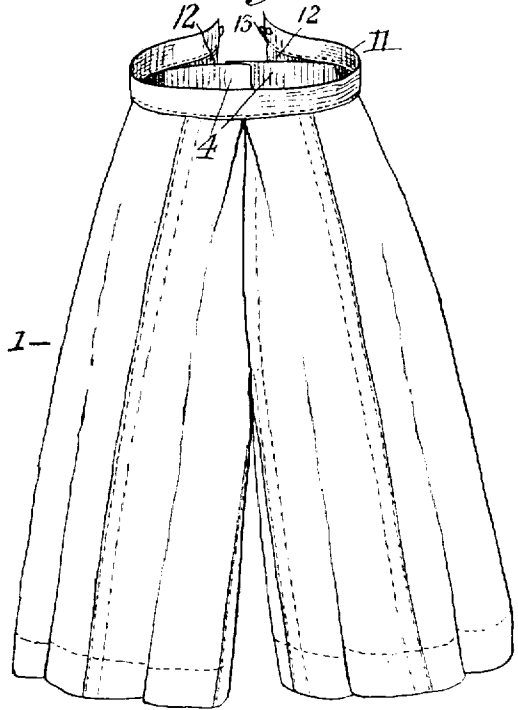


Fig. 3.

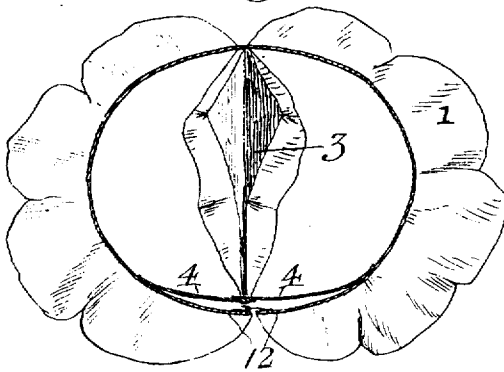


Fig. 4.

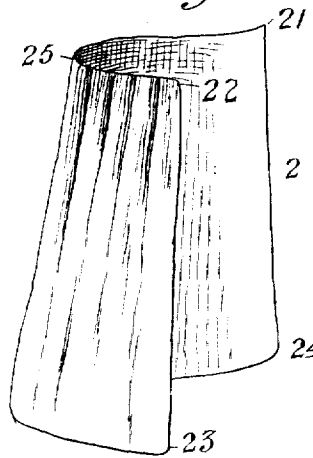
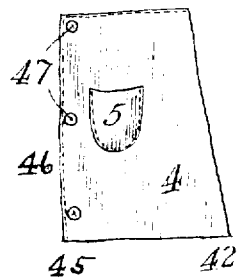


Fig. 5.



Witnesses:

Geo W. Stettin
Louis H. Stettin

Inventor:

Ella H. Cooper
by Geo. H. Cooper atty.

UNITED STATES PATENT OFFICE.

ELLA H. COOPER, OF MERIDEN, CONNECTICUT.

BICYCLE-SKIRT.

SPECIFICATION forming part of Letters Patent No. 555,211, dated February 25, 1896.

Application filed July 18, 1895. Serial No. 556,398. (No model.)

To all whom it may concern:

Be it known that I, ELLA H. COOPER, a citizen of the United States, residing at Meriden, New Haven county, Connecticut, have invented a new and useful Improvement in Garments, of which the following is a specification.

My invention relates to that class of garments worn by women when riding a cycle or horse, or in any exercise where freedom of movement is required. It is intended to provide a safe, comfortable and modest garment for such uses.

In the accompanying drawings, Figures 1 and 2 represent respectively a front and a rear view of my garment. Fig. 3 is a cross-section taken just above the seat thereof. Figs. 4 and 5 show separate portions of the garment detached from the remainder.

The same figures refer to like parts in the several views.

1 designates a skirt provided with waistband 11, front half-breadth 12, and fastenings 13.

2 is an interior partition whose corners are marked 21 22 23 24, respectively, a fold-point on its upper edge being marked 25.

3 is a seat or saddle portion.

4 is an extension-piece whose lower corners are marked respectively 42 and 45, and which has a fly 46 provided with fastenings 47.

5 is a pocket.

In the example of my invention illustrated in the drawings, the skirt 1 may be of any convenient or fashionable form or cut. As shown it has two front half-breadths open their entire length and provided at their meeting edges with fastenings 13, here shown as hooks and eyes. In the rear the sides of the skirt 1 are stitched together from the band to the seat and separate thence to the hem. Two inner partitions 2, one of which, the left, is shown in Fig. 4, are preferably made of the same material as the skirt 1. Each of the partitions 2 is secured to a side of the skirt 1, the rear edge 21 24 of the partition 2 being stitched to the rear separated edge of the skirt 1, while the front edge 22 23 of the partition 2 is united to the inside of the skirt at the rear seam of the front half-breadth 12. This is most clearly shown in Fig. 1 of the

drawings. A seat or saddle portion 3, which may, if desired, be of chamois or other leather, joins the upper edges of the partition 2 from their upper rear corners 21 to a point 25. Two extension-pieces 4, the left one of which is shown in Fig. 5 of the drawings, are also united at their lower edges with the upper edges of the partitions 2, the lower rear corners 42 of the extension-pieces connecting with the upper corners 22 of the partitions and the front lower corners 45 of the extension-pieces reaching to and being connected with the points 25 of the partitions and with the front end of the saddle portion 3. The rear seams of the pieces 4 are stitched to the rear seams of the half-breadths 12, as is also clearly shown in Fig. 1. The front edges of the pieces 4 are provided with fly portions 46, on which are buttons and buttonholes 47 or other desired means of securing them together. On the fronts of the extension-pieces 4 pockets 5 may be stitched if desired. As indicated in Figs. 4 and 5 of the drawings the distance 22 25 is preferably greater than the distance 42 45, so that the upper edge of the partition 2 is full or plaited on the lower edge of the piece 4.

The uses and advantages of the garment above described will readily appear from an inspection of the drawings. It will be noted that the skirt is open front and rear so that it freely falls on both sides of a cycle-frame or of a horse; that the fullness of the back of the skirt, and the fact that the sides are stitched together for some distance below the waistband, secures its falling together when the wearer is dismounted; that the front half-breadths may be secured together any desired distance below the band, thereby enabling it to be quickly adapted to a high-frame cycle, to a low frame, or to walking; that the fullness of the front of the partitions 2 permits free motion of the limbs in pedaling; that the pockets are covered by the parts 12, so that there is no opening or fold in which the cycle-handle may catch, and that the introduction of a saddle portion 3 between the partitions 2 prevents their being drawn up when the wearer is mounted.

I do not wish to be understood as limiting myself to the particular combination shown

or described, as I am aware that several changes may be made therefrom without departing from my invention.

5 What I claim as my invention, and desire to secure by Letters Patent of the United States, is as follows:

10 1. In a garment in combination, a skirt consisting of two sides separable in front and united in the rear from the waistband downward a portion of their length and separated
15 thence to the hem and two interior portions each united at its rear edge to the rear edge of said skirt side from the junction of said sides to the hem and at its front edge to the
20 side of said skirt at a distance from the front edge of said skirt side, the free portions of said skirt sides thus formed being adapted to be detachably secured to each other, substantially as described.

25 2. In a garment in combination, a skirt consisting of two sides separable in front and united in the rear from the waistband downward a portion of their length, two interior portions each united at its rear edge to the
30 rear edge of said skirt side from the junction of said sides to the hem and at its front edge

to the side of said skirt at a distance from the front edge of said skirt side, and a seat or saddle portion connecting the upper edges of said interior portions, substantially as described. 30

3. In a garment in combination, a skirt consisting of two sides separable in front and united in the rear from the waistband downward a portion of their length, two interior
35 portions each consisting of a partition 2 and an extension-piece 4, each of said partitions united at its rear edge to the rear edge of said skirt side from the junction of said sides to the hem and at its front edge to the side of
40 said skirt at a distance from the front edge of said skirt side, each of said extension-pieces being united at its lower edge to a portion of the upper edge of said partition and at its
45 rear edge to the side of said skirt substantially in a vertical line with that of the juncture of said partition and said side, substantially as described.

ELLA H. COOPER.

Witnesses:

GEO. L. COOPER,
CORA B. HOOD.